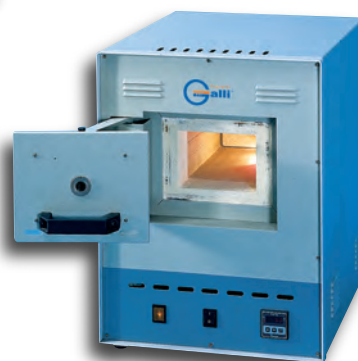
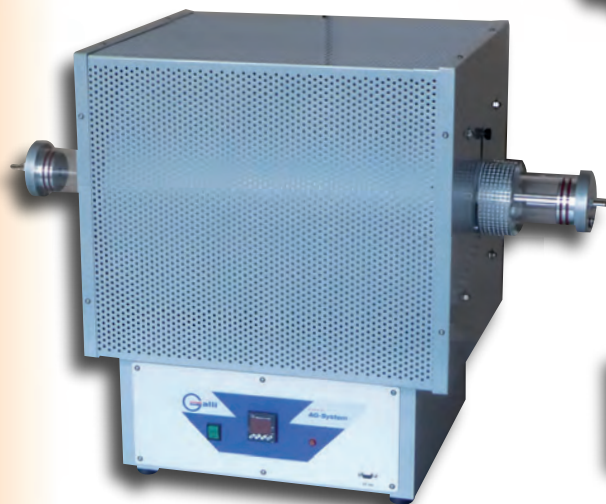


# Muffle Furnaces



**Stufe Termostatiche per la Ricerca, Controllo Qualità e Produzione**  
**Thermostatic Ovens for Research, Quality Control and Production**

Soluzioni per il Laboratorio e l'Industria  
*Laboratory and Industrial Solutions*

## MOD. MF100

**Forni a Muffola per ALTA TEMPERATURA, Esecuzione da Banco**

- \* Porta con apertura di Sicurezza e con MICROINTERRUTTORE
- \* Microprocessore PID DIGITALE

**HIGH TEMPERATURE Muffle Furnaces, Table Top model**

- \* Safety door opening with microswitch
- \* DIGITAL PID MICROPROCESSOR

CODE	W x D x H mm	Volume	Max °C
MF100X01DS	145 X 250 X 100	04	+ 1100°C
MF100X03DS	210 X 280 X 145	08	+ 1100°C
MF100X04DS	210 X 320 X 145	10	+ 1100°C
MF100X05DS	145 X 250 X 100	04	+ 1200°C
MF100X06DS	210 X 280 X 145	08	+ 1200°C

## MOD. MF200

**Forni a Muffola per ALTA TEMPERATURA, Esecuzione da Terra con Gambe**

- \* Porta con apertura di Sicurezza e con MICROINTERRUTTORE
- \* Microprocessore PID DIGITALE

**HIGH TEMPERATURE Muffle Furnaces, Floor type**

- \* Safety door opening with microswitch
- \* DIGITAL PID MICROPROCESSOR

CODE	W x D x H mm	Volume	Max °C
MF200X2401	250 X 500 X 190	24	+ 1100°C
MF200X2402	250 X 500 X 190	24	+ 1200°C
MF200X2403	AISI 304 Chamber		+ 1000°C
MF200X2404	Incoloy 600 Chamber		+ 1100°C
MF200X3601	300 X 500 X 240	36	+ 1100°C
MF200X3602	300 X 500 X 240	36	+ 1200°C
MF200X3603	AISI 304 Chamber		+ 1000°C
MF200X3604	Incoloy 600 Chamber		+ 1100 °C
MF200X6001	420 X 600 X 240	60	+ 1100°C
MF200X6002	420 X 600 X 240	60	+ 1200°C
MF200X6003	AISI 304 Chamber		+ 1000°C
MF200X6004	Incoloy 600 Chamber		+ 1100°C
MF200X7301	420 X 600 X 290	73	+ 1100°C
MF200X7302	420 X 600 X 290	73	+ 1200°C
MF200X7303	AISI 304 Chamber		+ 1000°C
MF200X7304	Incoloy 600 Chamber		+ 1100°C
MF200X9601	500 X 600 X 320	96	+ 1100°C
MF200X9602	500 X 600 X 320	96	+ 1200°C
MF200X9603	AISI 304 Chamber		+ 1000°C
MF200X9604	Incoloy 600 Chamber		+ 1100°C
MF200X1281	500 X 800 X 320	128	+ 1100°C
MF200X1801	500 X 600 X 600	180	+ 1100°C

## MOD. MF350

**Forni a Muffola TUBOLARE per ALTA TEMPERATURA, Esecuzione da Banco**

- \* Camera Tubolare con apertura passante
- \* Microprocessore PID DIGITALE

**HIGH TEMPERATURE Tubular Muffle Furnaces, Table Top model**

- \* Tubular chamber with through pass hole
- \* DIGITAL PID MICROPROCESSOR

CODE	Diam. x L mm	Max °C
MF350X42+600D	diam. 42 x 110	+ 600°C
MF350-050X400D	diam. 50 x 400	+ 1200°C
MF350-120X600D	diam.120 x 600	+ 1000°C
MF350-100X600D	diam.100 x 600	+ 1100°C

## MOD. MF400

**Forni a Muffola per ALTA TEMPERATURA, Esecuzione da Banco**

- \* Porta con apertura di Sicurezza e con MICROINTERRUTTORE
- \* Microprocessore PID DIGITALE

**HIGH TEMPERATURE Muffle Furnaces, Table Top model**

- \* Safety door opening with microswitch
- \* DIGITAL PID MICROPROCESSOR

CODE	W x D x H mm	Volume	Max °C
MF400X0401	150 X 250 X 100	4,0	+ 1400°C
MF400X0601	180 X 300 X 120	6,5	+ 1400°C

## MOD. MF500

**Forni a Muffola per ALTA TEMPERATURA, esecuzione Terra**

- \* Porta con apertura a Pantografo con Microinterruttore
- \* Microprocessore PID DIGITALE

**HIGH TEMPERATURE Muffle Furnaces, Floor type**

- \* Safety door opening with microswitch
- \* DIGITAL PID MICROPROCESSOR

CODE	W x D x H mm	Volume	Max °C
MF500X0401	150 X 250 X 100	4,0	+ 1400°C
MF500X0601	180 X 300 X 120	6,5	+ 1400°C
MF500X0101	200 X 350 X 150	10	+ 1400°C
MF500X0141	200 X 400 X 180	14	+ 1400°C
MF500X0251	250 X 500 X 200	25	+ 1400°C
MF500X0961	400 X 600 X 400	96	+ 1400°C

## MOD. MF550

**Forni a Muffola TUBOLARE per ALTISSIMA TEMPERATURA, esecuzione da Banco**

- \* Camera cilindrica, caricamento AUTOMATICO dal basso
- \* Microprocessore PID DIGITALE

**VERY HIGH TEMPERATURE Tubular Muffle Furnaces, Table Top model**

- \* Cylindrical chamber with Automatic bottom loading system
- \* DIGITAL PID MICROPROCESSOR

CODE	Diam. x H mm	Max °C
MF550X5001	50 x 100 mm	+ 1800°C

## MOD. MF600

**Forni a Muffola per ALTISSIMA TEMPERATURA, Esecuzione da Terra**

- \* Camera rettangolare, porta con apertura verso l'alto
- \* Microprocessore PID DIGITALE
- \* Trifase

**VERY HIGH TEMPERATURE Muffle Furnaces, Floor type**

- \* Rectangular chamber, opening door upwards
- \* DIGITAL PID MICROPROCESSOR. 3 PHASES
- \* 3 Phase

CODE	W x D x H mm	Volume	Max °C
MF600X5001	100 X 200 X 150	3,0	+ 1800°C

## MOD. MF700

**Forni a Muffola per ALTISSIMA TEMPERATURA, Esecuzione da Terra**

- \* Porta con apertura di Sicurezza e con MICROINTERRUTTORE
- \* Microprocessore PID DIGITALE

**VERY HIGH TEMPERATURE Muffle Furnaces, Floor type**

- \* Safety door opening with microswitch
- \* DIGITAL PID MICROPROCESSOR

CODE	W x D x H mm	Volume	Max °C
Single Phase			
MF700X7001	100 X 200 X 150	3,0	+ 1600°C
MF700X7002	100 X 200 X 150	3,0	+ 1700°C
MF700X7003	100 X 200 X 150	3,0	+ 1800°C
3 Phase			
MF700X1001	180 X 300 X 200	10	+ 1600°C
MF700X1002	180 X 300 X 200	10	+ 1700°C
MF700X1003	180 X 300 X 200	10	+ 1800°C
MF700X1601	200 X 400 X 200	16	+ 1600°C
MF700X1602	200 X 400 X 200	16	+ 1700°C
MF700X1603	200 X 400 X 200	16	+ 1800°C

Il costruttore si riserva la facoltà di modificare le caratteristiche e l'estetica del prodotto - The manufacturer reserve the right to change the design and the features of the products



BAGNI TERMOSTATICI E CRIOSTATI  
THERMOSTATICS BATHS AND CRYOSTATS



INCUBATORI, CO2, CAMERE CLIMATICHE  
INCUBATORS, CO2, CLIMATIC CHAMBERS



STUFE TERMOSTATICHE E FORNI  
THERMOSTATIC OVENS AND FURNACES



CAMERE SIMULAZIONE AMBIENTALE  
ENVIRONMENTAL TEST CHAMBERS



STRUMENTAZIONE PER BIOLOGIA MOLECOLARE E LIFE SCIENCE  
EQUIPMENT FOR MOLECULAR BIOLOGY AND LIFE SCIENCE